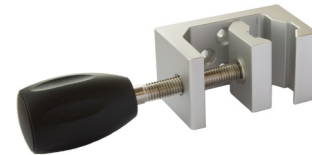


Blenders Air/Oxygen: High flow & Low flow



The Blender line delivers accurate medical air and oxygen mixtures at any concentration between 21 and 100% and can distribute it to various respiratory care devices. The mixer uses air and oxygen sources at a pressure of 345 kPa connected by DISS to the bottom of the mixer.

- They have various output ports, which allows you to operate various elements at once.
- We have high flow and low flow systems.
- Can be used with ventilators, nasal cannules, CPAP masks and resuscitation bags.
- Accessories:
 - Oxygen or medical air flexible hose assemblies with DISS connection.
 - Holder from Ø10 to Ø40 mm bar.



TECHNICAL SPECIFICATIONS

Blender Low Flow

- **Oxygen concentration range:** 21 - 100%.
- **Accuracy:** 3% full scale.
- **Flow Range:** 0 to 30 lpm.
- **Input port fittings:** DISS.
- **Output port fittings:** DISS.
- **Output port Flow Range:**
 - Left:
 - 3-30 lpm (no bleed)
 - 0-30 lpm (with bleed)
 - Bottom:
 - 3-30 lpm (no bleed)
 - 0-30 lpm (with bleed)
 - Right: 0-30 lpm (with bleed)
- **Bleed for Flows <3 lpm:** 3 lpm.
- **Size:** 122 x 137 x 117 mm (WxHxD).
- **Weight:** 1,5 Kg.
- In compliance with **ISO 11195** standard.

Blender High Flow

- **Oxygen concentration range:** 21 - 100%.
- **Accuracy:** 3% full scale.
- **Flow Range:** 15 to 150 lpm.
- **Input port fittings:** DISS.
- **Output port fittings:** DISS.
- **Output port Flow Range:**
 - Left: 15-150 lpm (no bleed)
 - Bottom 15-150 lpm (no bleed)
 - Right: N/A
- **Bleed for Flows <3 lpm:** No bleed.
- **Size:** 122 x 137 x 117 mm (WxHxD).
- **Weight:** 1,5 Kg.
- In compliance with **ISO 11195** standard.